



**Mekong River Commission**

# **Weekly Dry Season Situation Report in the Lower Mekong River Basin 21-27 February 2023**

Prepared by  
The Regional Flood and Drought Management Centre  
28 February 2023

*The MRC is funded by contributions from its Member Countries and Development Partners, including Australia, Belgium, the European Union, Finland, France, Germany, Japan, Luxembourg, the Netherlands, Sweden, Switzerland, the United States and the World Bank.*

**Copyright © Mekong River Commission, 2020**

First published (2020)

Some rights reserved

This work is the product of the Mekong River Commission Secretariat. While all efforts are made to present accurate information, the Secretariat does not guarantee the accuracy of the data included in this work. The boundaries, colours, denomination, and other information shown on any map in this work do not imply any judgement on the part of the MRC concerning the legal status of any territory or the endorsement or acceptance of such boundaries.

Nothing herein shall constitute or be considered to be a limitation upon or waiver of the privileges and immunities of the MRC, all of which are specifically reserved.

This publication may be reproduced in whole or in part and in any form for educational or non-profit purposes without special permission from the copyright holder, provided acknowledgement of the source is made and notification is sent to the MRC. The MRC would appreciate receiving a copy of any publication that uses this publication as a source. This publication cannot be used for sale or for any other commercial purpose whatsoever without permission in writing from the MRC.

**Title:** Weekly wet season situation report in the Lower Mekong River Basin for 21-27 Feb 2023.

ISSN: 1728-3248

Keywords: River monitoring/drought/weather/the Mekong/the Tonle Sap Lake

For bibliographic purposes, this volume may be cited as:

Mekong River Commission. (2020). *Weekly dry season situation report in the Lower Mekong River Basin for 21-27 Feb 2023*. Vientiane: MRC Secretariat.

Information on MRC publications and digital products can be found at  
<http://www.mrcmekong.org/publications/>

**All queries on rights and licenses should be addressed to:**

Mekong River Commission

Documentation and Learning Centre

184 Fa Ngoum Road, Unit 18, Ban Sithane Neua, Sikhottabong District, Vientiane 01000, Lao PDR

Telephone: +856-21 263 263 | E-mail: [mrcc@mrcmekong.org](mailto:mrcc@mrcmekong.org) | [www.mrcmekong.org](http://www.mrcmekong.org)

# Contents

- Figures..... 2**
- Table ..... 3**
- Key Messages ..... 4**
- 1 Introduction ..... 6**
- 2 General Weather Patterns..... 7**
- 3 Water Levels in the Lower Mekong River ..... 11**
- 4 Flash Flood in the Lower Mekong Basin ..... 18**
- 5 Drought Monitoring in the Lower Mekong Basin..... 19**
- 6 Weather and Water Level Forecast and Flash Flood Information..... 22**
  - 6.1 Weather and rainfall forecast..... 22*
  - 6.2 Water level forecast ..... 23*
  - 6.3 Flash Flood Information..... 24*
  - 6.4 Drought forecast..... 25*
- 7 Summary and Possible Implications ..... 27**
  - 7.1 Rainfall and its forecast..... 27*
  - 7.2 Water level and its forecast..... 27*
  - 7.3 Flash flood and its trends..... 28*
  - 7.4 Drought condition and its forecast..... 28*

## Figures

<b>Figure 1: Summary of weather conditions over the LMB. ....</b>	<b>7</b>
<b>Figure 2: Outlook of wet and dry conditions over the Asian countries by ASMC.....</b>	<b>8</b>
<b>Figure 3: No tropical storm risk observed on 27 February 2023. ....</b>	<b>8</b>
<b>Figure 4: Weekly total rainfall at key stations in the LMB.....</b>	<b>9</b>
<b>Figure 5: Weekly rainfall distribution over the LMB.....</b>	<b>10</b>
<b>Figure 6: Key stations and model application for River Monitoring and Flood Forecasting.</b>	<b>11</b>
<b>Figure 7. Water level at the Jinghong hydrological station during to 27 February 2023. ....</b>	<b>12</b>
<b>Figure 8. Water levels at Chiang Saen in Thailand and Luang Prabang in Lao PDR. ....</b>	<b>13</b>
<b>Figure 9. Water levels Vientiane and Paksane in Thailand and Lao PDR. ....</b>	<b>14</b>
<b>Figure 10: Water levels at Nakhon Phanom and Savannakhet of Thailand and Lao PDR. ...</b>	<b>14</b>
<b>Figure 11: Water levels at Stung Treng and Kratie on the Mekong River. ....</b>	<b>15</b>
<b>Figure 12: Seasonal change of inflows and outflows of Tonle Sap Lake. ....</b>	<b>16</b>
<b>Figure 13. The seasonal change in monthly flow volume of Tonle Sap Lake.....</b>	<b>17</b>
<b>Figure 14: Weekly standardised precipitation index from Feb 20 to 26. ....</b>	<b>19</b>
<b>Figure 15: Weekly Index of Soil Water Fraction from Feb 20 to 26.....</b>	<b>20</b>
<b>Figure 16: Weekly Combined Drought Index duing Feb 20-26. ....</b>	<b>21</b>
<b>Figure 17: Accumulated rainfall forecast (24 hrs) of model GFS. ....</b>	<b>23</b>
<b>Figure 18. Monthly forecast of NMME for Jan, Feb and Mar 2023. ....</b>	<b>25</b>

**Table**

**Table 1. The monthly change in the flow volume of Tonle Sap Lake. .... 17**

**Table 2. Weekly River Monitoring Bulletin. .... 26**

## Key Messages

Key messages for this weekly report are presented below.

### Rainfall and its forecast

- During February 21-27, no rainfall was observed along the Mekong River, from Chiang Saen in Thailand to Tan Chau and Chau Doc in Viet Nam.
- There will be wind and cold temperatures for the next 7 days over the Mekong region from 28 February to 7 March 2023.

### Water level and its forecast

- The MRC's observed water level (WL) at Jinghong showed a fluctuation between 536.02 m to 536.32 m during 21-27 Feb 2023. The outflow fluctuated between 1,330.00 m<sup>3</sup>/s and 1,540.00 m<sup>3</sup>/s during 21-27 Feb 2023.
- Along with the fluctuated outflow at Jinghong upstream, water level of monitoring station at Chiang Saen in Thailand went up about 0.36 m during the reporting period and stayed 0.23 m above its LTA, considered normal. WLs at the monitoring stations at Chiang Khan in Thailand increased about 0.25 m, staying 0.13 m above its LTA value, while at Vientiane in Lao PDR it decreased about 0.19 m and still stayed about 0.23 m above its LTA value. The current WL from Nong Khai in Thailand was about 0.60 m lower than its LTA value, while at Paksane in Lao PDR it was about 0.75 m lower than its LTA level, which considered low water levels. WLs from Thailand's Nakhon Phanom to Savannakhet fluctuated between 0.05 m and 0.26 m, but from Khong Chiam in Thailand to Pakse in Lao PDR the WLs increased about 0.15 m. WLs at these stations are slightly staying lower than their LTA value, except at Khong Chiam and Pakse the WLs were staying slightly higher than their LTA value. Water levels from the stretches of the river from Stung Treng to Kratie in Cambodia, moreover, were slightly increasing and still staying higher than their LTA value due to contributed inflows and some rainfall from the upstream part (at Pakse and 3S area in Viet Nam). WL at Kompong Cham is about 0.17 m lower than its LTA value.
- The water volume of the Tonle Sap Lake was slightly lower than its LTA during the same period from 21-27 Feb 2023, considered normal.
- The current water levels for most of the stations are below their LTA value, except at Chiang Saen, Luang Prabang, Chiang Khan, Vientiane, Khong Chiam, Pakse, Stung Treng, Kratie and Koh Khel. WLs at the 2 tidal stations at Tan Chau and Chau Doc fluctuated between their minimum and LTA values, during this monitoring period.
- Over the next seven days, the water levels across most monitoring stations are expected to go down and remain lower than their long-term average value in most stations.

### Drought condition and its forecast

- During Feb 20-26, the LMB was at normal condition in the upper and lower parts but at moderate dry in some areas of Vientiane, Borikhamxay, Khammuane, Nong Khai,

and Nakhon Phanom in the north and Otdar Meanchey in the south. Those specific drought hotspots are considered normal as they are caused by dry soil moisture phenomenon during dry season.

- For the coming three months, no drought is forecasted over the LMB. In Feb and Mar 2023, the LMB will be likely normal all over the region. However, in April the NMME forecasts that the region will receive above average rainfall, specifically in the north and the south of the LMB.



# 1 Introduction

This Weekly Dry Season Situation Report presents a preliminary analysis of the weekly hydrological situation in the Lower Mekong River Basin (LMB) for **21-27 February 2023**. The trend and outlook for water levels are also presented.

This analysis is based on the daily hydro-meteorological data provided by the Mekong River Commission (MRC) Member Countries – Cambodia, Lao PDR, Thailand, and Viet Nam – and on satellite data. Water level indicated in this report refers to an above zero gauge of each station.

The report covers the following topics that are updated weekly:

- General weather patterns, including rainfall patterns over the LMB
- Water levels in the LMB, including in the Tonle Sap
- Flash flood and drought situation in the LMB
- Weather, water level and flash flood forecast, and
- Possible implications.

Mekong River water levels are updated daily and can be accessed from:  
[http://ffw.mrcmekong.org/bulletin\\_wet.php](http://ffw.mrcmekong.org/bulletin_wet.php).

Drought monitoring and forecasting information is available at:  
<http://droughtforecast.mrcmekong.org>

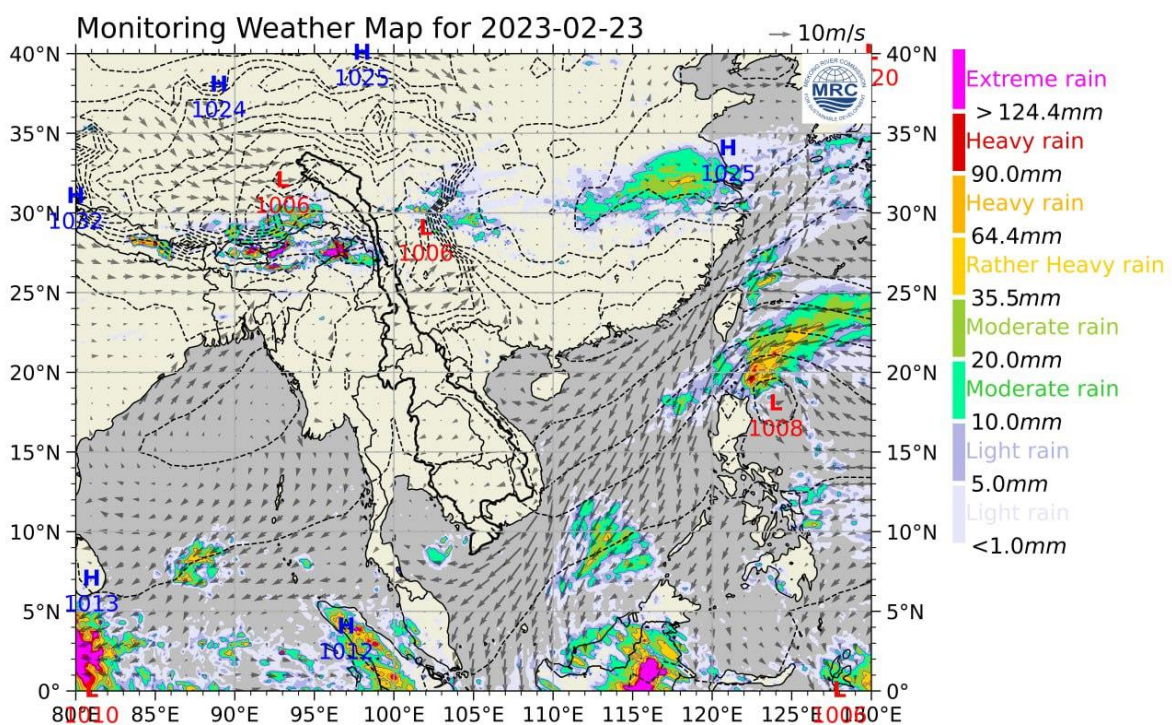
Flash flood information is accessible at: <http://ffw.mrcmekong.org/ffg.php>

## 2 General Weather Patterns

The weather outlook bulletins for three months (February, March and April) and the weather maps issued by the Thai Meteorological Department (TMD) were used to verify weather conditions in the LMB.

Since the end of January 2022, the cold weather has appeared because the influentially high-pressure air mass areas prevail over the LMB, with gradually decreasing water levels in both mainstream and tributaries. The data from the TMD predict that low pressure of air-mass will continue cool weather condition in the upper part of Thailand, Lao PDR and Viet Nam. As a result, the temperature in the upper part of Thailand will drop sharply as commonly chilly weather, specifically at the upper portion of the northern and north-eastern parts together with very cold weather in mountainous areas (within the Mekong region).

[Figure 1](#) presents the weather map on 23 February 2023, indicating that no low-pressure cell was active in the South-Sea of Viet Nam have no impact in the LMB. Generally, the Mekong region is influenced by easterly wind from the Western-north Pacific with troughs over the southern highlands of Viet Nam. Under this weather condition, still, no rainfall occurred in LMB except for central Viet Nam which was associated with the trough activity.



**Figure 1: Summary of weather conditions over the LMB.**

According to the ASEAN Specialised Meteorological Centre (ASMC), a highest probability of wet and warm conditions are predicted over the lower part of the Mekong region covering Lao PDR and Thailand from 20 February to 5 March 2023, during the 4<sup>th</sup> and 1<sup>st</sup> weeks of February and March 2023. **Figure 2** shows the outlook of weather condition from Feb 20 to Mar 5 in Southeast Asia based on results from the NCEP model (National Centres for Environmental Prediction).

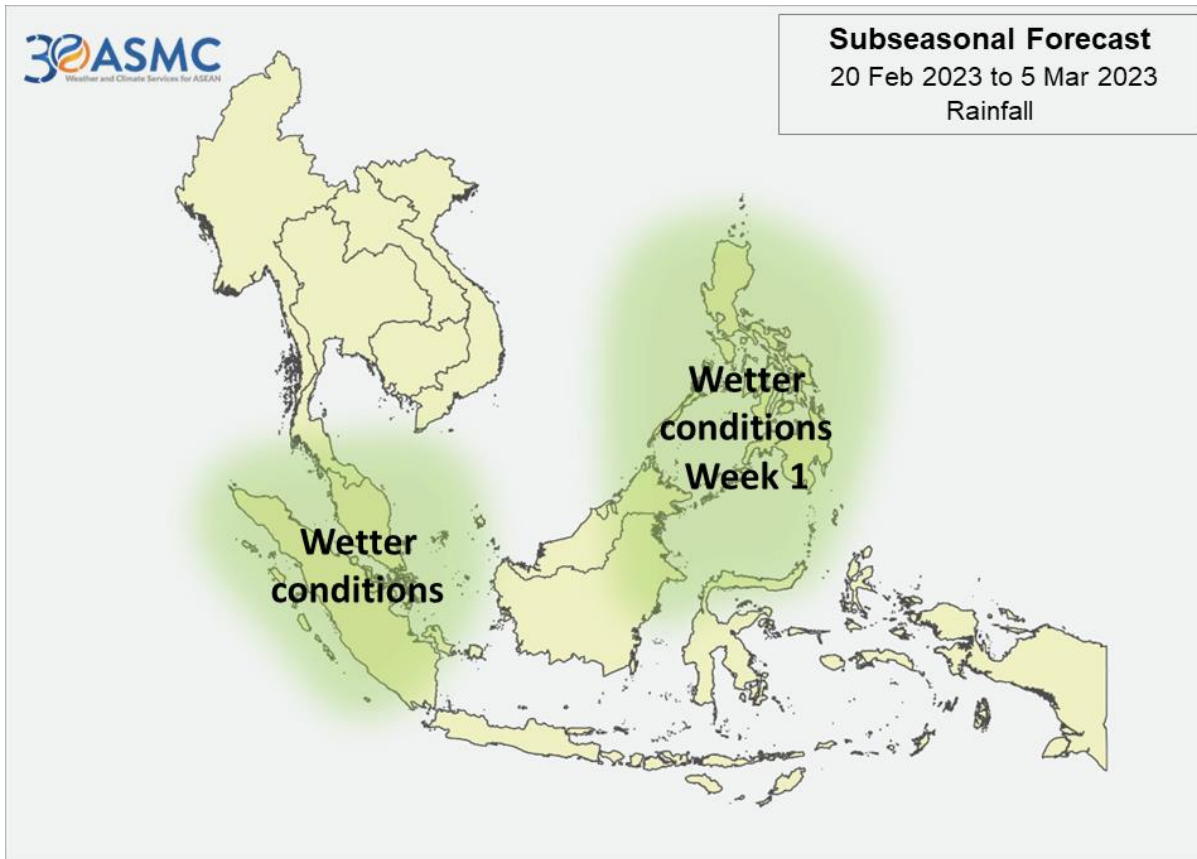


Figure 2: Outlook of wet and dry conditions over the Asian countries by ASMC.

**Tropical depressions (TD), tropical storms (TS) and typhoons (TY)**

There was a tracking storm covering the LMB during 27 February 2023, showing no low-pressure line over the LMB. No movement of storm was detected over Viet Nam, as displayed in [Figure 3](#).

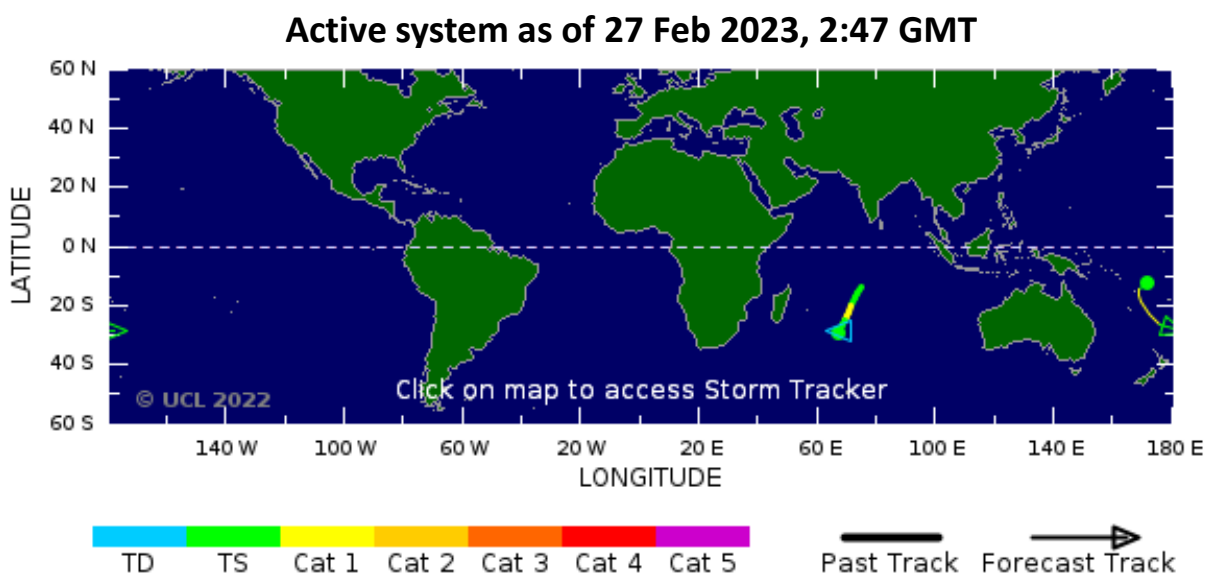
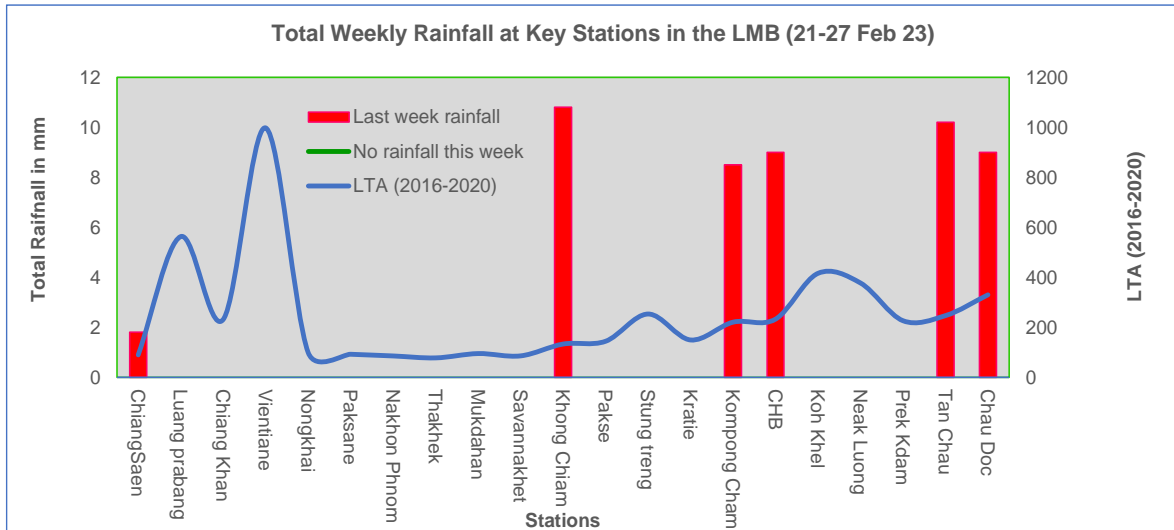


Figure 3: No tropical storm risk observed on 27 February 2023.

## Rainfall patterns over the LMB

This week from 21 to 27 February 2023, no rainfall was observed along the Mekong River from Chiang Saen in Thailand to Tan Chau and Chau Doc in Viet Nam of the Lower Mekong Basin (LMB). The total rainfall of this week report in the Mekong region compared with last week and its long-term-average (LTA) is showed in [Figure 4](#). The total rainfall of this week was considered low in a specific station in the LMB.



**Figure 4: Weekly total rainfall at key stations in the LMB.**

To verify area rainfall distribution, [Figure 5](#) shows a map of the weekly accumulated rainfall based on the observed data provided by the MRC Member Countries – Cambodia, Lao PDR, Thailand, and Viet Nam – from 21 to 27 February 2023.

Absence of rain this week is an indication of the end of the rainy season in the LMB.

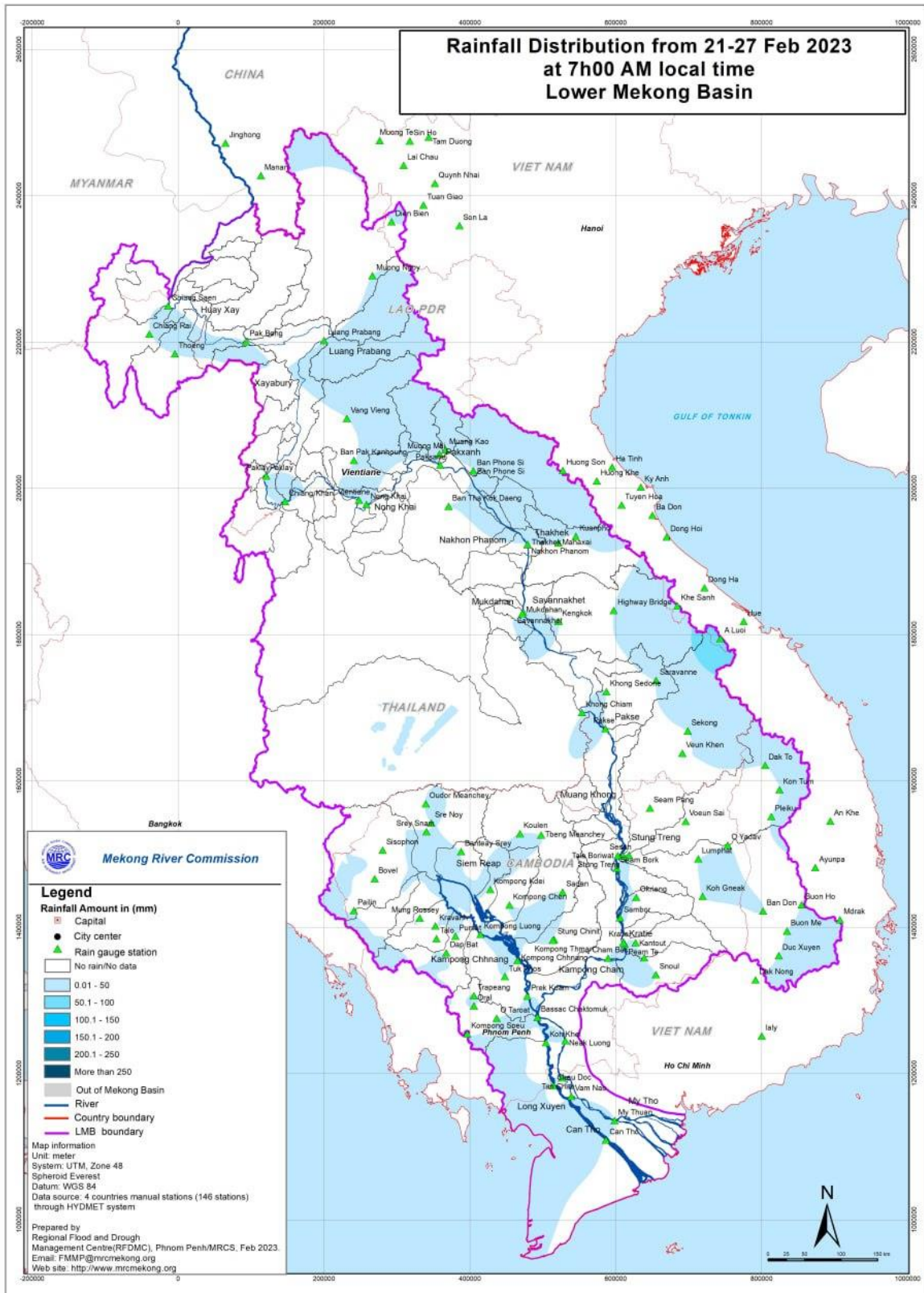


Figure 5: Weekly rainfall distribution over the LMB.

### 3 Water Levels in the Lower Mekong River

The hydrological regimes of the Mekong mainstream are illustrated by recorded water levels and flows at key mainstream stations: at Chiang Saen to capture mainstream flows entering from the Upper Mekong Basin (UMB); at Vientiane to present flows generated by climate conditions in the upper part of the LMB; at Pakse to investigate flows influenced by inflows from the larger Mekong tributaries; at Kratie in Cambodia to capture overall flows of the Mekong Basin; and at Viet Nam’s Tan Chau and Chau Doc to monitor flows to the Delta.

The key stations along the LMB and their respective model application for River Flood Forecasting during the wet season from June to October and River Monitoring during the dry season from November to May are presented in [Figure 6](#). The hydrograph for each key station is available from the MRC’s River Flood Forecasting: <http://ffw.mrcmekong.org/overview.php>. The weekly water levels and rainfall at each key station are summarised in **Annex A**.

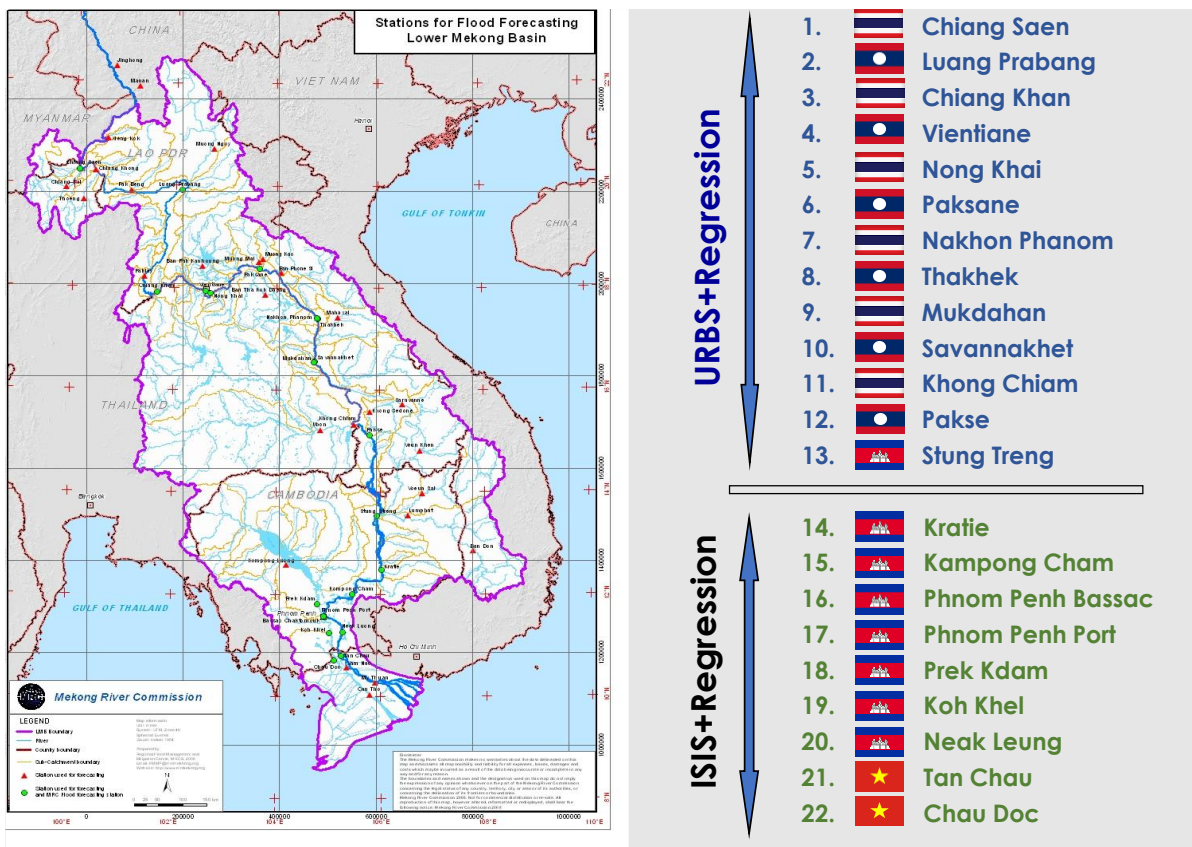
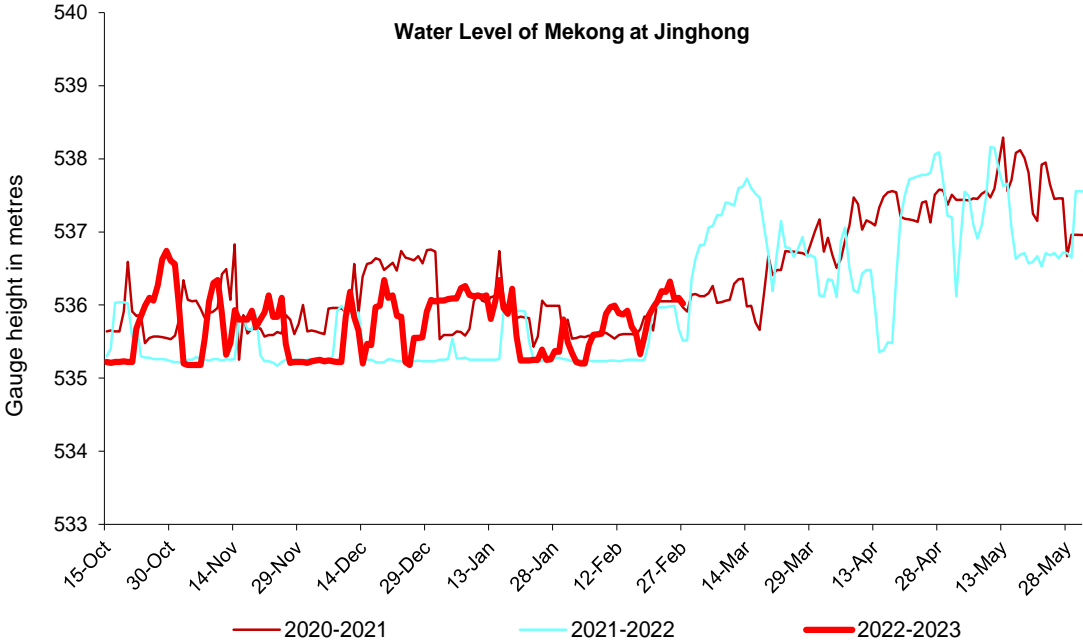


Figure 6: Key stations and model application for River Monitoring and Flood Forecasting.

The MRC’s observed water level (WL) at Jinghong showed fluctuated water level from 536.02 m to 536.32 m between 21 and 27 Feb 2023 (recorded on 7:00 am). The outflow increased from 1,330.00 m<sup>3</sup>/s to 1,530.00 m<sup>3</sup>/s between 21 and 27 Feb 2023.

[Figure 7](#) below presents water level that decreased at the Jinghong hydrological station<sup>1</sup>, indicating the trend of fluctuating water level up to 27 February 2023.



**Figure 7. Water level at the Jinghong hydrological station during to 27 February 2023.**

With the fluctuated outflow from Jinghong upstream, water level of monitoring station at Chiang Saen in Thailand increased 0.36 m from 21 to 27 Feb 2023 and stayed about 0.23 m higher than its long-term average (LTA), which considered normal level (PMFM’s defined threshold). WLs at the monitoring station at Chiang Khan in Thailand increased 0.25 m and stayed 0.13 m higher than its LTA, while at Vientiane in Lao PDR it decreased about 0.19 m and still stayed about 0.23 m above its LTA value. The current WLs from Nong Khai in Thailand, furthermore, decreased 0.20 m and stayed 0.60 m lower than its LTA, while at Paksane in Lao PDR it decreased about 0.14 m and stayed 0.70 m lower than its LTA value. WLs at these stations were considered low. Water levels from Nakhon Phanom in Thailand to Savannakhet in Lao PDR fluctuated between 0.03 m and 0.26 m, while from Khong Chiam in Thailand to Pakse in Lao PDR increased between 0.02 m and 0.19 m. WLs at these stations were staying below their LTA value, excepted at Khong Chiam and Pakse the WLs were slightly above their LTA values considering normal. Water levels from the stretches of the river from Stung Treng to Kratie in Cambodia, moreover, were slightly increasing between 0.05 m and 0.12 m. The water levels at and at Kompong Cham decreased about 0.19 m due to inflow and contributed rainfall from the upstream part. WLs at Stung Treng and Kratie were staying about 0.45 m and 1.07 m higher than their LTA value, respectively. WL at Kompong Cham was staying about 0.17 m lower than its LTA value.

<sup>1</sup> Near-real time data of hydro-meteorological monitoring at the Jinghong hydrological station is available at <https://portal.mrcmekong.org/monitoring/river-monitoring-telemetry>.

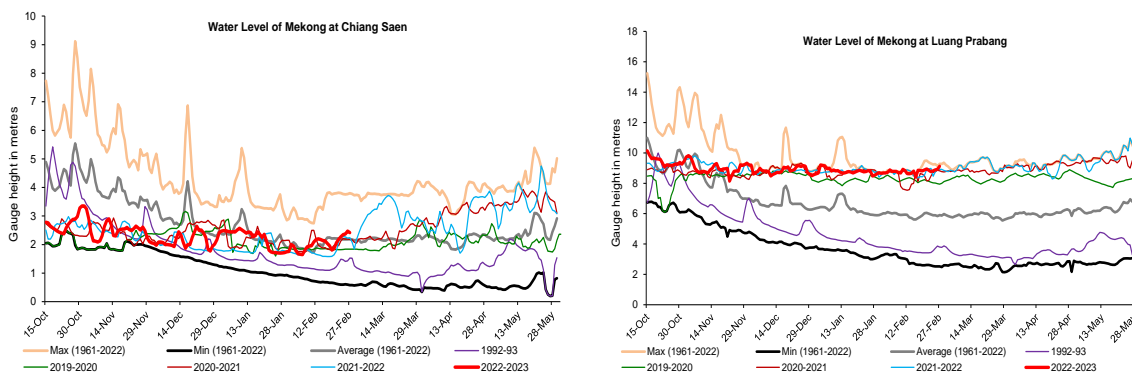
Based on hydrological phenomenon, the contribution of inflow water from the upstream of Lancang-Mekong in China to the Mekong mainstream is about 16% in total during the wet season from June to October and about 25% in total during the dry season from November to May. The whole inflow of water into the LMB is influenced by rainfall at the Mekong mainstream and its tributaries during the wet season.

### Chiang Saen and Luang Prabang

Water level during 21-27 Feb 2023 at Thailand’s Chiang Saen increased from 2.06 m to 2.42 m, staying about 0.23 m higher than its Long-Term-Average (LTA), which is considered normal level. When compared to last week, this week’s water level is relatively higher.

Water level at the Luang Prabang station in Lao PDR increased from 8.94 m to 9.12 m, during the reporting period. Compared to last week, the figure shows it is up about 0.18 m. The water level at this station was 3.22 m higher than its LTA value and about 0.16 m lower than its historical maximum value. The water levels at Chiang Saen and Luang Prabang are shown in [Figure 8](#) below.

Being situated between the upstream (Nam Beng, Nam Ou, Nam Suong, and Nam Khan) and downstream (Xayaburi) hydropower dams, the Luang Prabang station has a unique characteristic as it is influenced by the operations of all its surrounding dams. **Thus, the water level at this station can possibly change very rapidly during the early dry season.**



**Figure 8. Water levels at Chiang Saen in Thailand and Luang Prabang in Lao PDR.**

### Chiang Khan, Vientiane-Nong Khai and Paksane

The water level at Chiang Khan in Thailand (downstream of the Xayaburi dam) increased about 0.25 m, during the reporting week. It showed 0.13 m above its LTA. However, water level downstream at Vientiane in Lao PDR decreased from 1.84 m to 1.64 m and still about 0.23 m higher than its LTA during 21-27 Feb 2023. At Nong Khai station in Thailand, the water level decreased about 0.20 m during the reporting period. It showed 0.60 m lower than its LTA value, which considered low water level. At Paksane in Lao PDR, water level decreased about 0.14 m staying about 0.70 m lower than its LTA value. The recently decreased water levels were obviously due to fluctuated inflow from upstream and water operation from upstream and some rainfalls in the sub-catchment area. The water levels at Vientiane and Paksane are shown in [Figure 9](#) below.



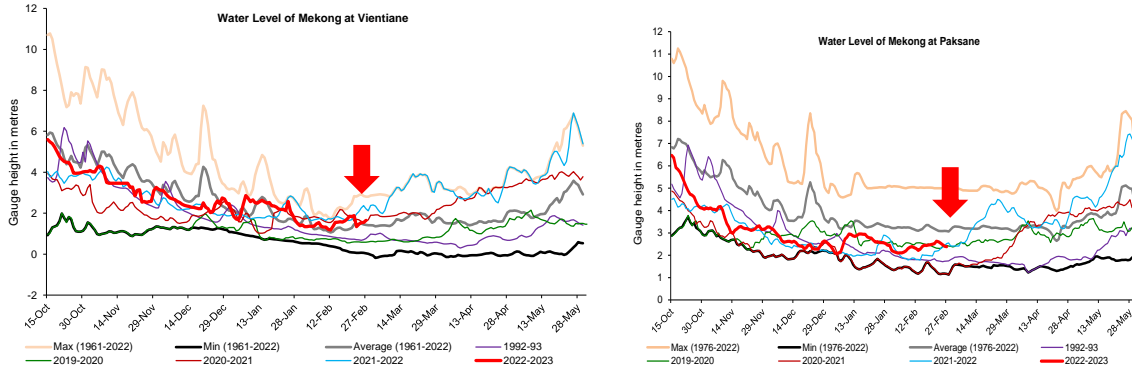


Figure 9. Water levels Vientiane and Paksane in Thailand and Lao PDR.

### Nakhon Phanom to Pakse

Moreover, water levels from Nakhon Phanom in Thailand to Savannakhet in Lao PDR fluctuated between 0.02 m and 0.20 m, while from Khong Chiam in Thailand to Pakse in Lao PDR increased about 0.15 m. The water levels of those stations were lower than their LTA value, except at Khong Chiam and Pakse the WLS were staying slightly higher than their LTA value, considered normal. [Figure 10](#) shows the water levels at Nakhon Phanom and Pakse stations.

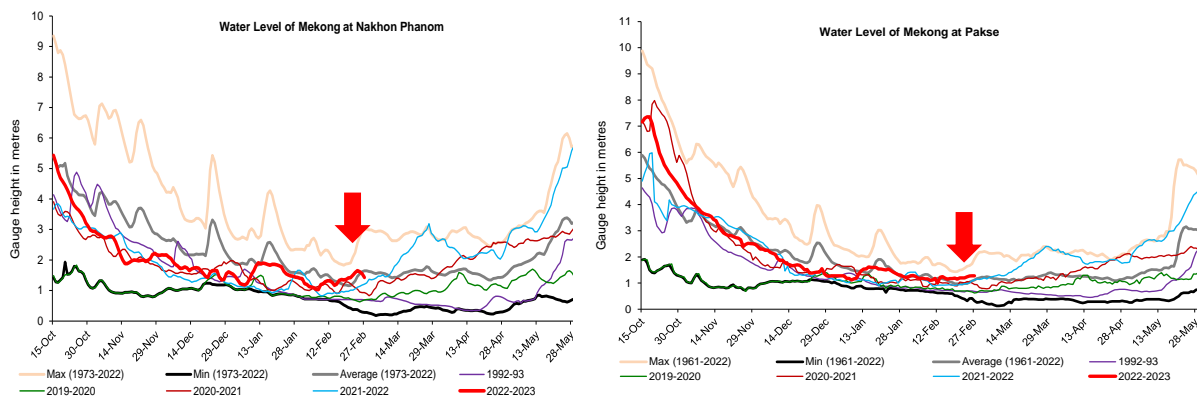
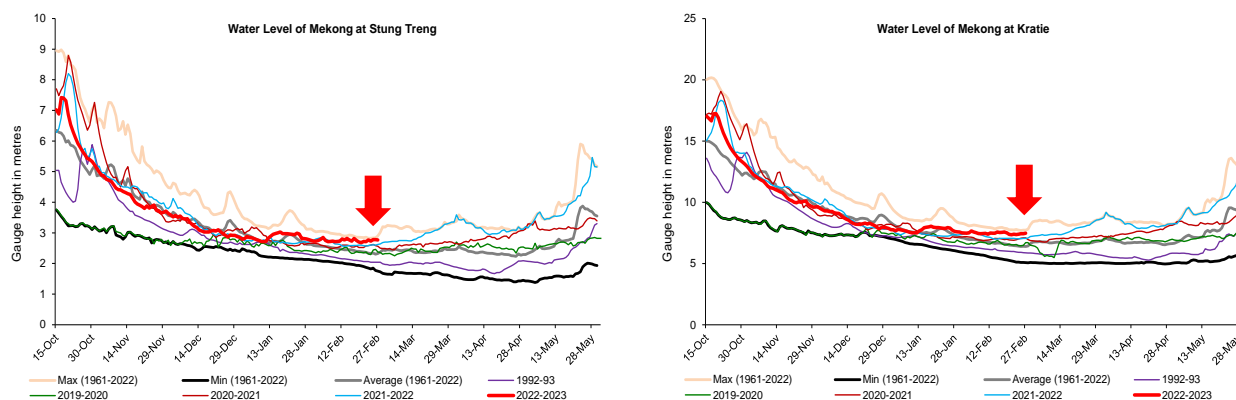


Figure 10: Water levels at Nakhon Phanom and Savannakhet of Thailand and Lao PDR.

### Stung Treng to Kompong Cham/Phnom Penh to Koh Khel/Neak Luong

Due to less rainfall from the upstream part of the Mekong River and the 3S river (Sekong, Se San, and Sre Pok), the water levels from Stung Treng to Kratie in Cambodia were slightly increasing during 21-27 Feb 2023. The water levels from Stung Treng to Kratie increased about 0.05 m and 0.12 m, respectively. However, water levels at Stung Treng and Kratie are remaining about 0.45 m and 1.07 m higher than their LTA value. Water levels at these two stations were considered high during the dry season (as showed in [Figure 11](#)).

This week, the water levels at Kompong Cham were down about 0.19 m and stayed 0.17 m below their LTA value, which considered normal.



**Figure 11: Water levels at Stung Treng and Kratie on the Mekong River.**

At Chaktomuk on the Bassac River, due to some contributed flows from upstream catchment, the water level was up by about 0.01 m and stayed 0.17 m lower than its LTA value; while at Koh Khel, water level increased about 0.08 m, staying 0.24 m higher than its LTA value. It was observed that the WLs at Koh Khel and Neak Luong were affected by tidal from downstream Tan Chau and Chau Doc in Viet Nam, during the dry season period. However, water level at Prek Kdam on the Tonle Sap Lake decreased about 0.15 m and was about 0.28 m lower than its LTA value. The water level at the Tonle Sap Lake (observed at Kompong Luong) was similar to Prek Kdam station's water level. The recently decreased water level was due to absence of rainfall and less inflow contributed from upstream of the Tonle Sap Lake area during the reporting period. The water level at the Tonle Sap Lake (observed at Kompong Luong) followed the same trend of Prek Kdam station's water level. **Water levels at these stations were mostly staying lower than their LTA level, which still considered low water level.**

### Tidal stations at Tan Chau and Chau Doc

Like last week, the water levels from 21 to 27 Feb 2023 at Viet Nam's Tan Chau and Chau Doc were fluctuating between their LTA and minimum values due to daily tidal effects from the sea. The fluctuation levels were between 0.25 m and 1.83 m. In Tan Chau and Chau Doc, the fluctuation of water levels at these stations were lower than their LTA level, which **considered critical.**

### The Tonle Sap Flow

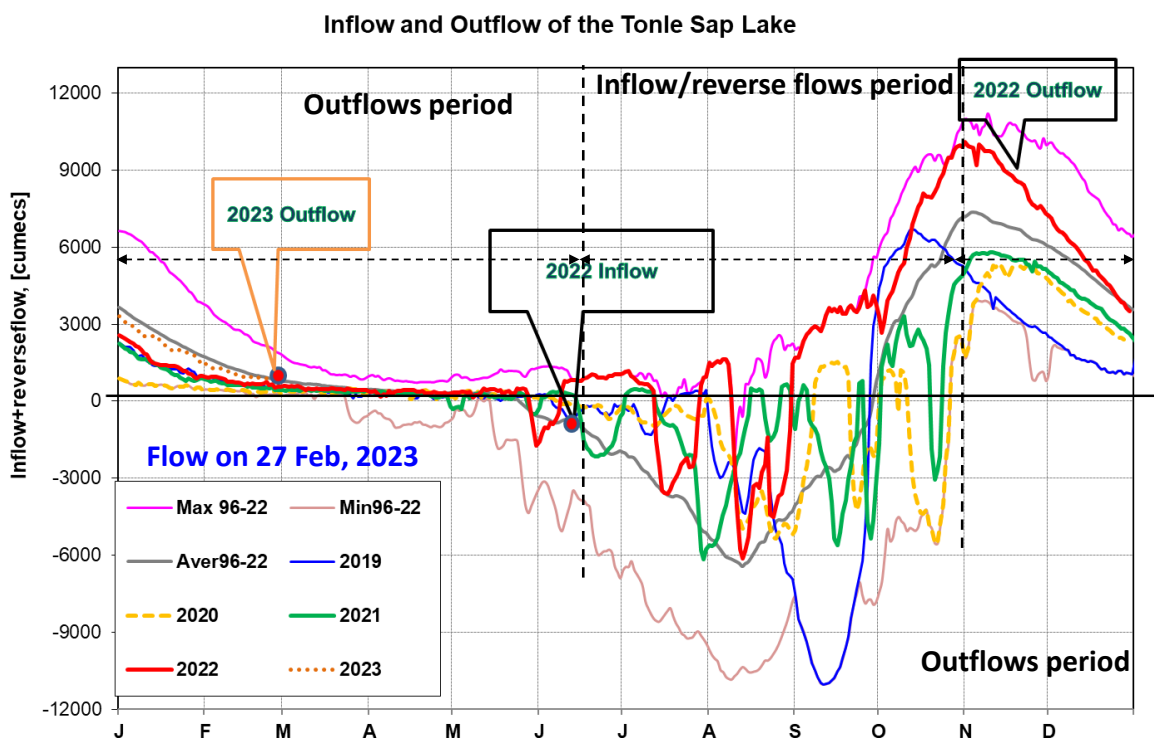
At the end of the wet season, when water levels along the Mekong River subside, the outflows of the Tonle Sap Lake return into the Mekong River and then to the Delta. This phenomenon normally takes place at any date in between end of September and October. Based on flow observation at Prek Kdam, the outflow of the Tonle Sap Lake was taking place since 29 October 2022.

[Figure 12](#) shows the seasonal changes of the inflow/reverse flow and the outflow of the TSL at Prek Kdam in comparison with the flows of 2019-2021 and 2022, and their LTA level (1997-2022). Up to February 27 of this reporting period, **it was observed that the main outflow to Tonle Sap Lake decreased due to less rainfall and inflows from upstream.** This decreased outflow of Tonle Sap Lake was most likely caused by less inflows and rainfall from the

catchment area. Up to this date, the outflow from the Tonle Sap Lake condition in 2022 is higher than 2020, 2021 and 2022 outflow conditions. The outflow in early 2023 is still slightly lower than its LTA. For next week, less rainfall is forecasted for the Tonle Sap area; thus, the outflow into the Tonle Sap Lake is likely continuing to decrease from the current level.

[Figure 13](#) shows seasonal changes in monthly flow volumes up to 27 February 2023 for the Lake compared with the volumes in 2020, 2021, 2022 and their LTA, and the fluctuation levels (1997–2021). It shows that up to 27 Feb 2023, **the water volume of the Tonle Sap Lake was staying slightly lower than its LTA (about 7 %) and higher than 2020, 2021, 2022 during the same period.** The figure is displayed in [Table 1](#), which indicates that the Tonle Sap Lake has been affected by water levels from the Mekong River, the tributaries, and rainfall in the surrounding sub-catchments and ***considered normal.***

This demonstrates the influence of the relationships between the reverse flows, water levels of the Mekong River, inflows from tributaries, and the flow direction in the complex hydraulic environment of the Tonle Sap Lake during the wet and dry seasons. The data show that about half of the annual inflow volume into the Tonle Sap Lake has originated from the Mekong mainstream. Thus, flow alterations in the mainstream could have direct impact on the Tonle Sap Lake water levels and on its hydrology.



**Figure 12: Seasonal change of inflows and outflows of Tonle Sap Lake.**

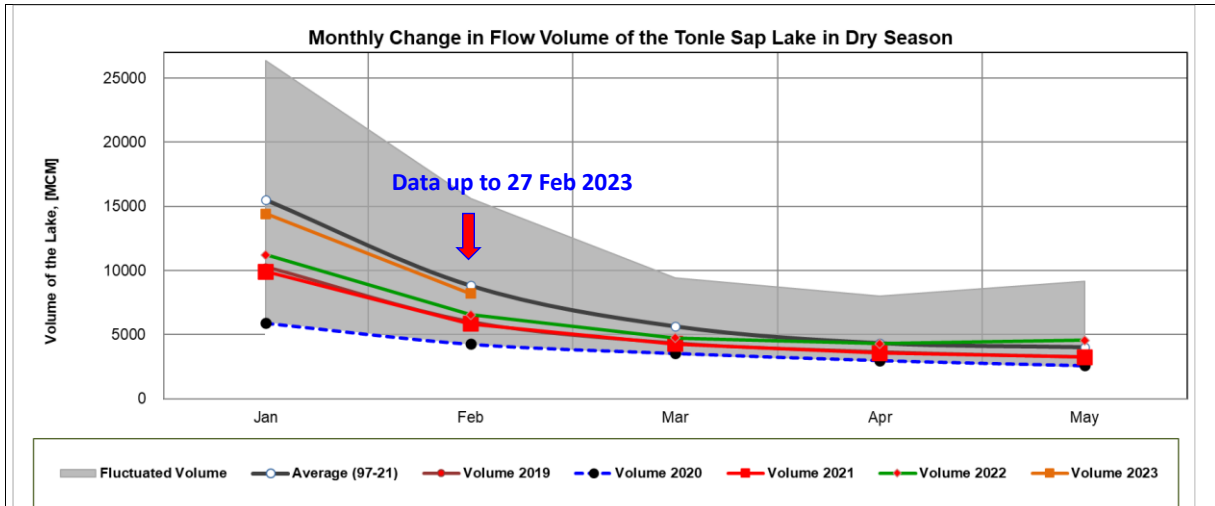


Figure 13. The seasonal change in monthly flow volume of Tonle Sap Lake.

Table 1. The monthly change in the flow volume of Tonle Sap Lake.

Month	LTA (97-22) [MCM]	Max Volume [MCM]	Min Volume [MCM]	Volume 2019 [MCM]	Volume 2020 [MCM]	Volume 2021 [MCM]	Volume 2022 [MCM]	Volume 2023 [MCM]	Volume in 2023 [%], compared with its LTA
Jan	15523.23	26357.53	5906.80	10285.31	5906.80	9923.80	11214.32	14422.11	92.91
Feb	8837.89	15596.22	4198.60	6019.30	4264.19	5832.97	6558.79	8193.91	92.71
Mar	5654.18	9438.24	3347.07	4354.62	3553.99	4264.88	4736.52		
Apr	4346.65	8009.14	2866.91	3667.47	2992.61	3556.68	4288.31		
May	4030.23	9176.93	2417.81	3266.43	2594.92	3240.78	4556.83		
Jun	5708.30	13635.01	2468.70	3517.06	2641.88	3798.29	7489.04		
Jul	11493.25	28599.56	2925.86	4001.99	2925.86	5346.73	9703.79		
Aug	24666.69	39015.12	4433.46	7622.71	5941.07	10547.80	19554.70		
Sep	39634.03	65632.35	12105.31	24194.19	12105.31	16382.34	32860.34		
Oct	46873.44	73757.23	19705.50	30358.38	20799.13	27318.21	48199.12		
Nov	37823.16	60367.33	18534.61	19112.65	27546.80	28982.93	39452.53		
Dec	25126.11	38888.95	10563.49	10577.29	18251.65	20170.76	25346.65		
	Critical situation, compared with historical Min values								
	Normal condition, compared with LTA (Long term average)								
	Low volume situation, compared with LTA values								
Unit: Million Cubic Meter (1 MCM= 0.001 Km <sup>3</sup> )				LTA: Long-Term-Average					

## **4 Flash Flood in the Lower Mekong Basin**

During 21-27 February 2023, the LMB was affected by two main weather factors. These include (i) the high-pressure system from China extended to upper part with cold air mass covered the upper and middle parts and (ii) the active northeast monsoon prevailed over the Gulf of Thailand. These conditions caused generally cool weather and thunderstorms in some areas of the LMB.

According to the MRC-Flash Flood Guidance System (MRC-FFGS) and analysis, flash flood events were not detected during the reporting period over the LMB.

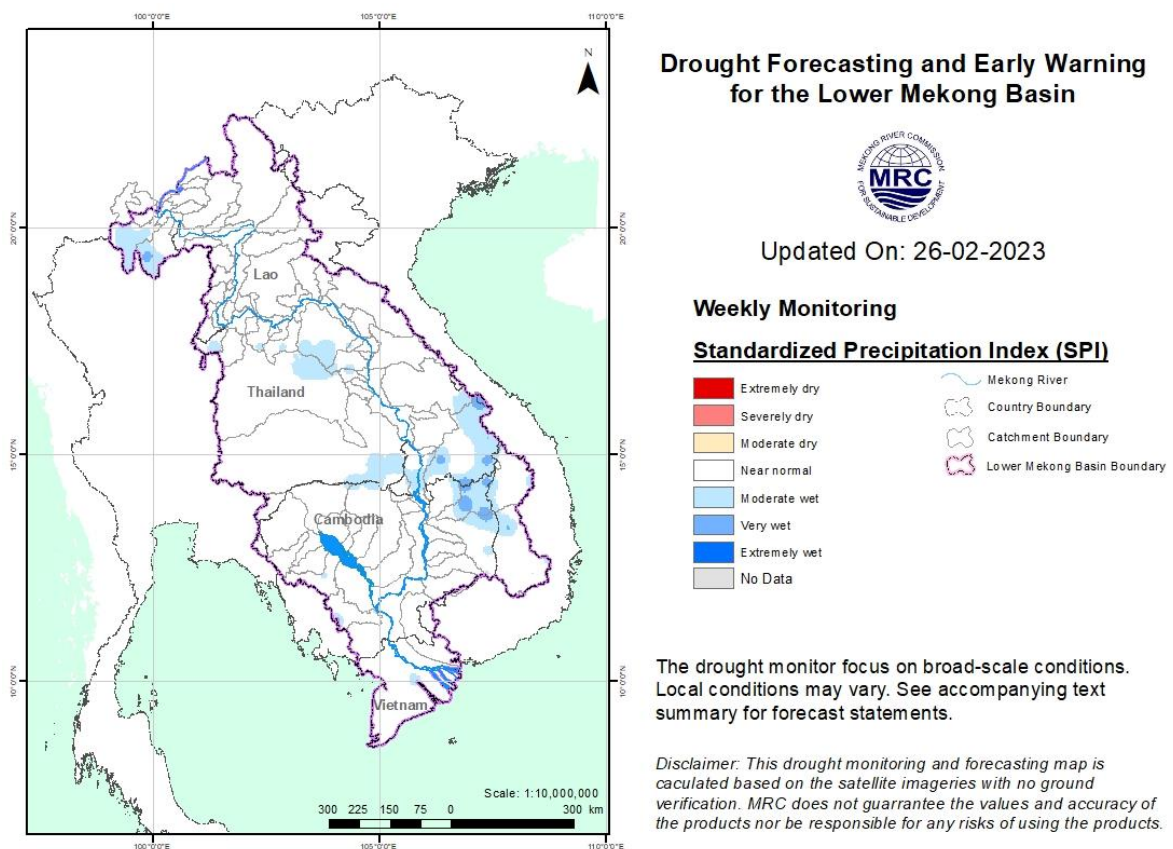
## 5 Drought Monitoring in the Lower Mekong Basin

### Weekly drought monitoring from 20 to 26 February 2023

Drought monitoring data for 2023 are available from Monday to Sunday every week; thus, the reporting period is normally delayed by one day compared to Flood and Flash Flood reports. We adopt the Index of Soil Water Fraction (ISWF) data obtained from FFGS to represent soil moisture of agricultural indicator for both dry and wet seasons.

- **Weekly Standardised Precipitation Index (SPI1)**

Meteorological drought condition of the LMB from Feb 20 to 26, as shown in [Figure 11](#), was normal all over the region. No meteorological drought was found during the monitoring week.

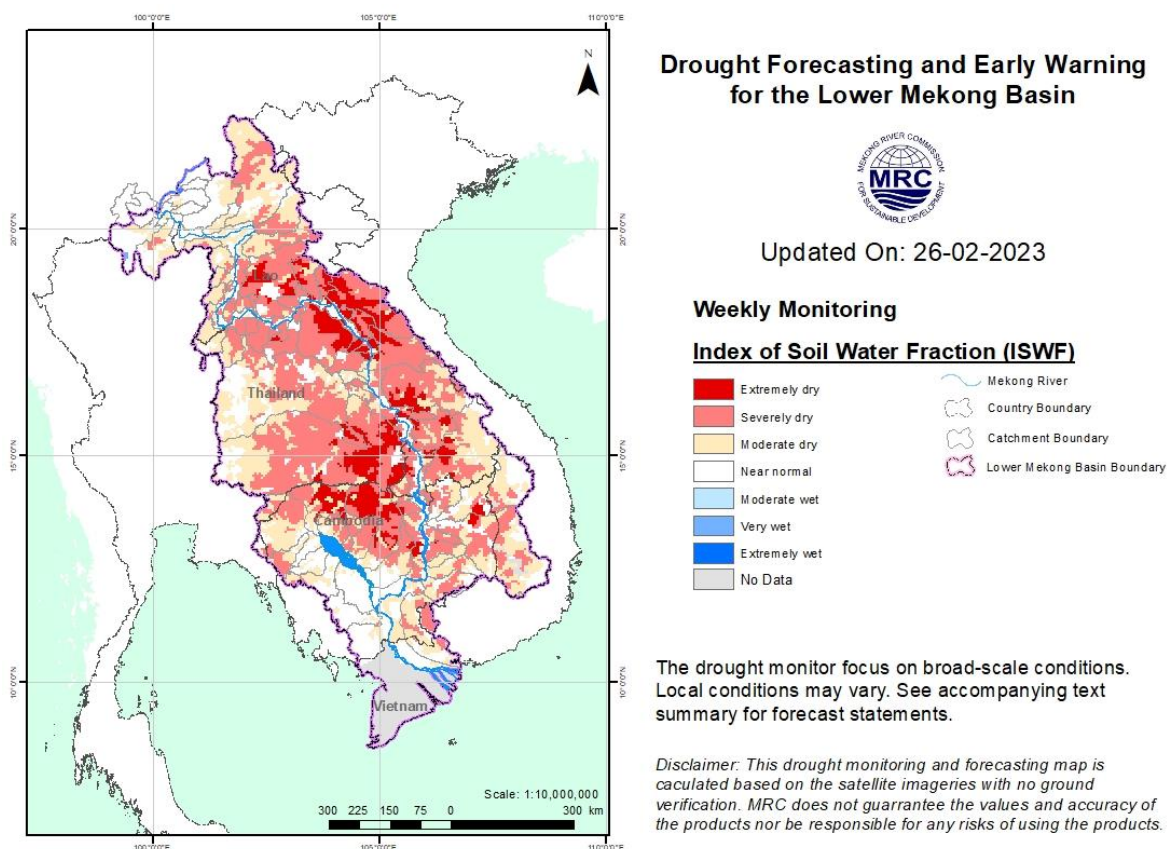


**Figure 14: Weekly standardised precipitation index from Feb 20 to 26.**

- **Weekly Index of Soil Water Fraction (ISWF)**

With relatively less rainfall in the northern and southern parts of the region, soil moisture condition from Feb 20 to 26, as displayed in [Figure 12](#), were severely dry in some areas in the north and middle part of the LMB. However, this condition is normal during dry season and is slightly more severe than the condition last week.

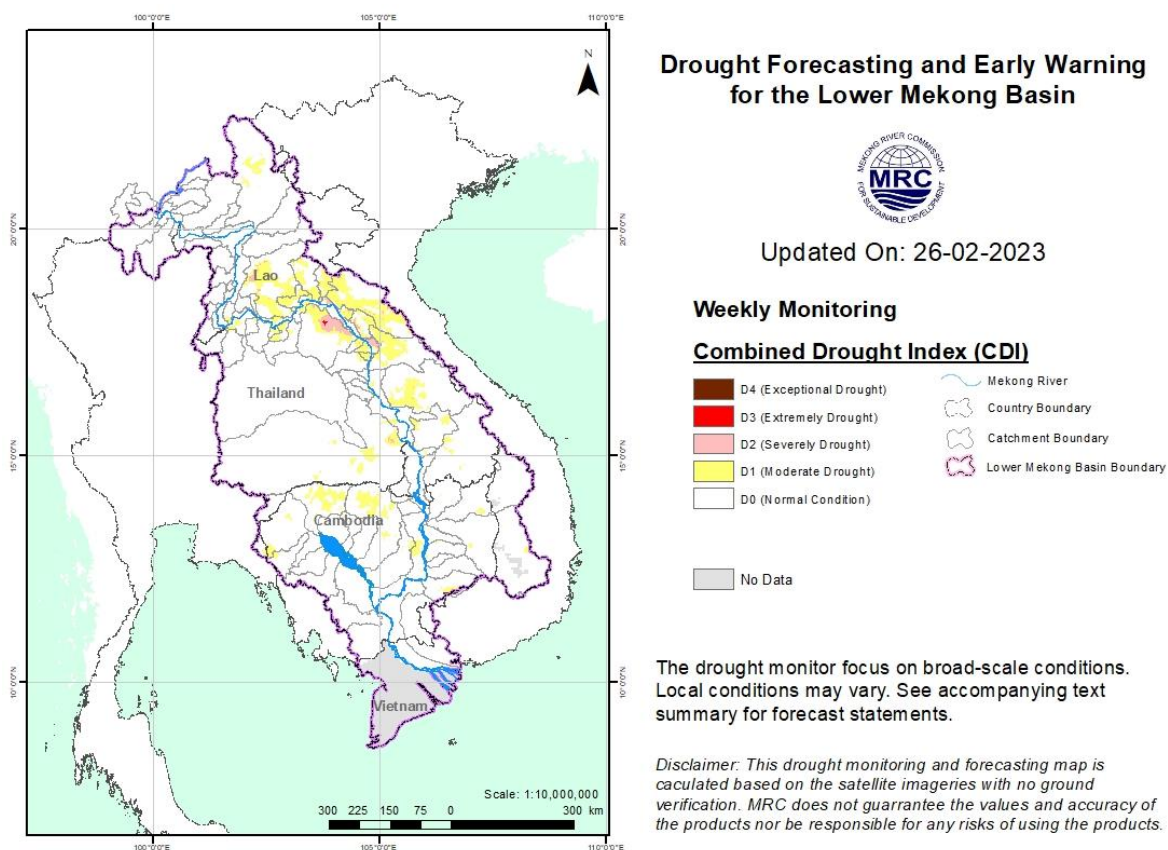
**Note:** The index of soil water fraction presents the current soil water fraction conditions compared with normal month; therefore, it normally shows extremely dry during dry season which is completely different from SPI that is standardized to its specific month of the years. However, this does not mean that the areas are threatened by agricultural drought as generally during transition period of wet and dry seasons and dry season only the irrigated areas are used for agricultural plantation.



**Figure 15: Weekly Index of Soil Water Fraction from Feb 20 to 26.**

- **Weekly Combined Drought Index (CDI)**

The combined drought indicator, as displayed in [Figure 13](#), reveals that during Feb 20-26 the LMB was at normal condition in the upper and lower parts but at moderate dry in some areas of Vientiane, Borikhamxay, Khammuane, Nong Khai, and Nakhon Phanom in the north and Otdar Meanchey in the south. Those specific drought hotspots are considered normal as they are caused by dry soil moisture phenomenon during dry season.



**Figure 16: Weekly Combined Drought Index during Feb 20-26.**

More information on Drought Forecasting and Early Warning (DFEW) as well as the explanation is available here: <http://droughtforecast.mrcmekong.org/templates/view/our-product>. DFEW provides not only weekly monitoring and forecasting information but also a three-month forecast of drought indicators with seasonal outlook which are updated every month based on international weather forecast models. Details on drought forecast are described in section [6.4](#) of this report.



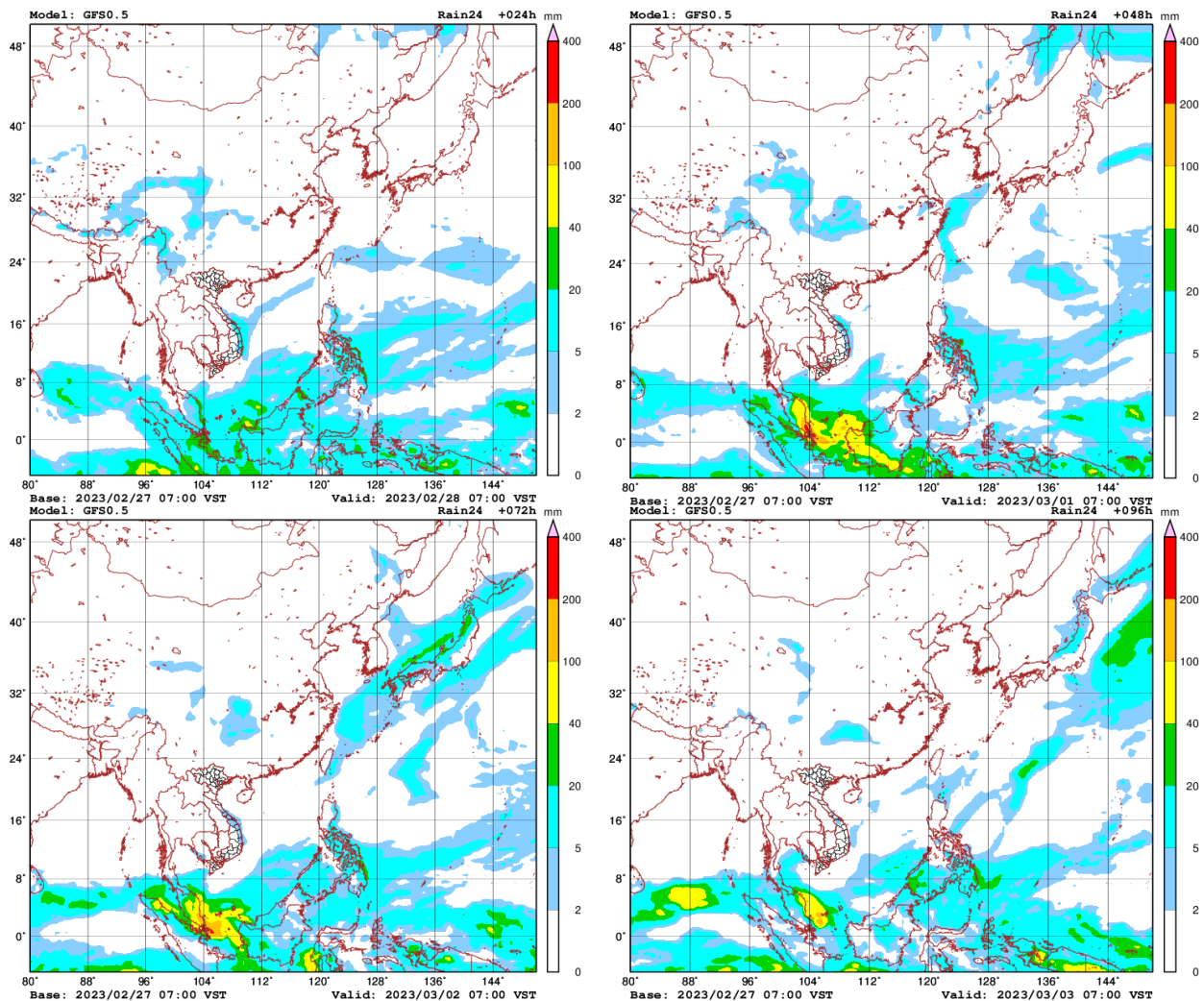
## 6 Weather and Water Level Forecast and Flash Flood Information

### 6.1 Weather and rainfall forecast

Based on the analysis of the synoptic meteorological information and result from the Global Forecast System (GFS) Model, in the coming week, two main factors might affect the LMB. They include (i) moderate and high-pressure area from China that would cover the upper and middle parts and (ii) the on-going prevailing Southwest Monsoon from the Gulf of Thailand to the lower part of the LMB.

During 28 February-6 March 2023, small rainfall (5-20 mm/24h) may occur in the LMB.

[Figure 14](#) shows accumulated rainfall forecast (24hrs) of the GFS model during 28 February-6 March 2023.



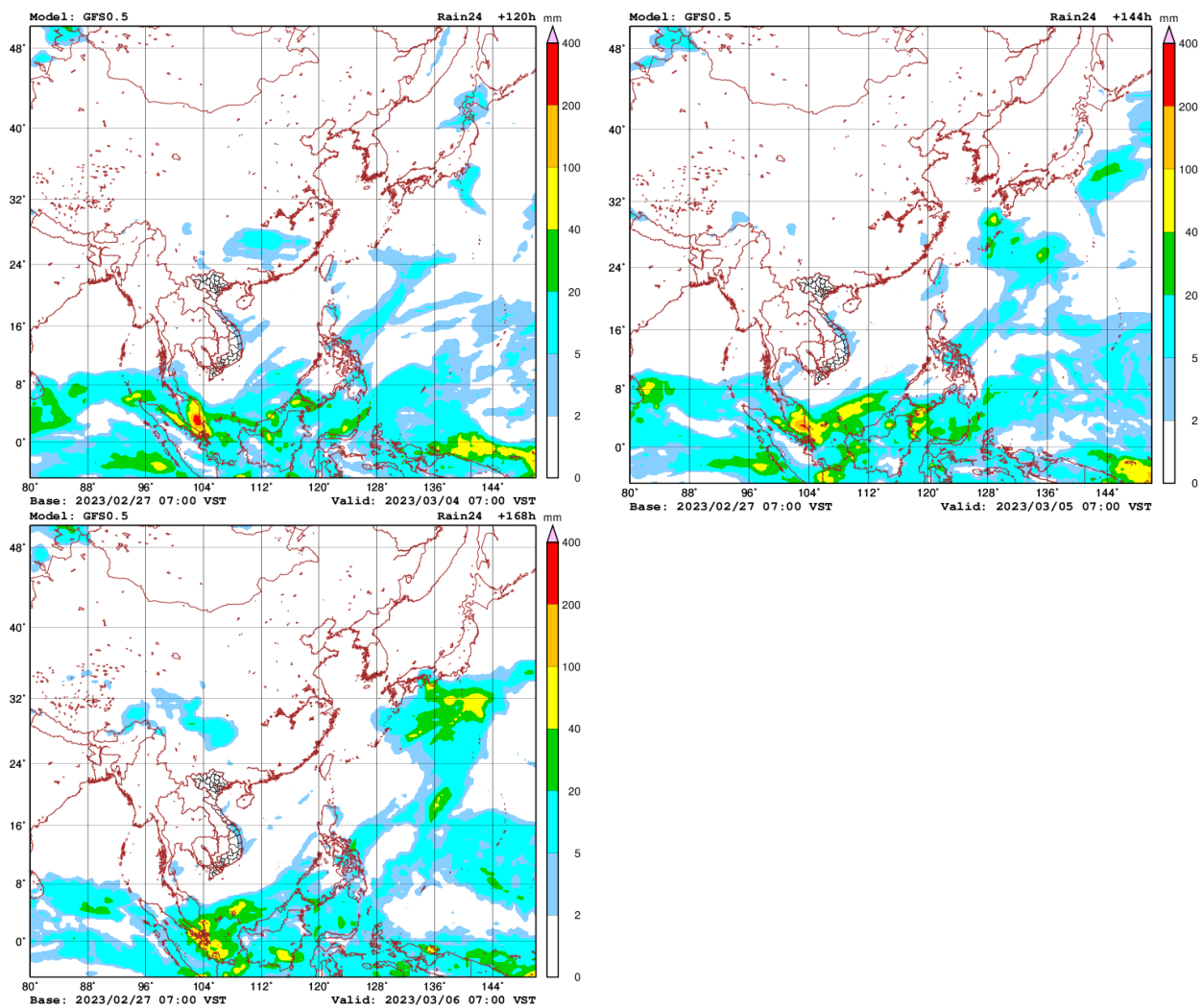


Figure 17: Accumulated rainfall forecast (24 hrs) of model GFS.

## 6.2 Water level forecast

### Chiang Saen and Luang Prabang

Based on February 27's weekly river monitoring bulletin, the weekly forecast water level at Chiang Saen in Thailand is expected to decrease from 2.42 m to 2.15 m in the next seven days. The trend of water levels at these stations will continue staying below its LTA.

For Luang Prabang in Lao PDR, the water level is likely decreasing about 0.25 m during the same period. The current water level is about 3.22 m higher than its LTA and about 0.16 m lower than its historical maximum value.

### Chiang Khan, Vientiane-Nong Khai and Paksane

Water level at Chiang Khan station in Thailand is forecasted to be up about 0.05 m for the next seven days. At Vientiane in Lao PDR and Nong Khai in Thailand WLS will be up between 0.10 m and 0.25 m in the next seven days. At Paksane in Lao PDR, water level will increase about 0.15 m due to some effect of inflows from the upper catchments. No rainfalls are forecasted

in the area due to low pressure dominated in the upper sub-catchments. The water levels here will remain lower than their LTA.

### **Nakhon Phanom to Pakse**

Water levels from Nakhon Phanom in Thailand to Pakse in Lao PDR will increase between 0.03 m and 0.15 m. Water levels at these stations will stay lower than their LTA level. Next week no precipitation is forecasted in the area.

### **Stung Treng to Kompong Cham/Phnom Penh to Koh Khel/Neak Luong**

From Stung Treng on the Mekong River in Cambodia, the water level will likely go up about 0.05 m, while at Kratie it will be down about 0.10 m over the next seven days. For Kompong Cham, the WL will be down about 0.05 m and stay lower than its LTA. No rainfall is forecasted for the area between Stung Treng and Kompong Cham during next week.

The water levels of the Tonle Sap Lake at Prek Kdam and Phnom Penh Port as well as at Phnom Penh's Chaktomuk on the Bassac River will decrease between 0.05 m and 0.15 m over the next seven days.

Water levels at most of the stations will continue to stay lower than their LTA value, particularly in the lower part of the region from the Bassac in Phnom Penh to Koh Khel as well as from Tonle Sap in Prek Kdam to Phnom Penh Port, including the Tonle Sap Lake. No rainfall is forecasted for the low-lying area of Cambodia next week.

### **Tidal stations at Tan Chau and Chau Doc**

For Viet Nam's Tan Chau on the Mekong River and Chau Doc on the Bassac River, water levels will be moving up between their LTA and minimum values following daily tidal effects from the sea.

[Table 3](#) shows the weekly River Monitoring Bulletin issued on February 27. Results of the started weekly river monitoring bulletin are also available at [http://ffw.mrcmekong.org/bulletin\\_wet.php](http://ffw.mrcmekong.org/bulletin_wet.php). Tables for weekly updated water levels and rainfall at the Key Stations are presented in **Annex A**.

## **6.3 Flash Flood Information**

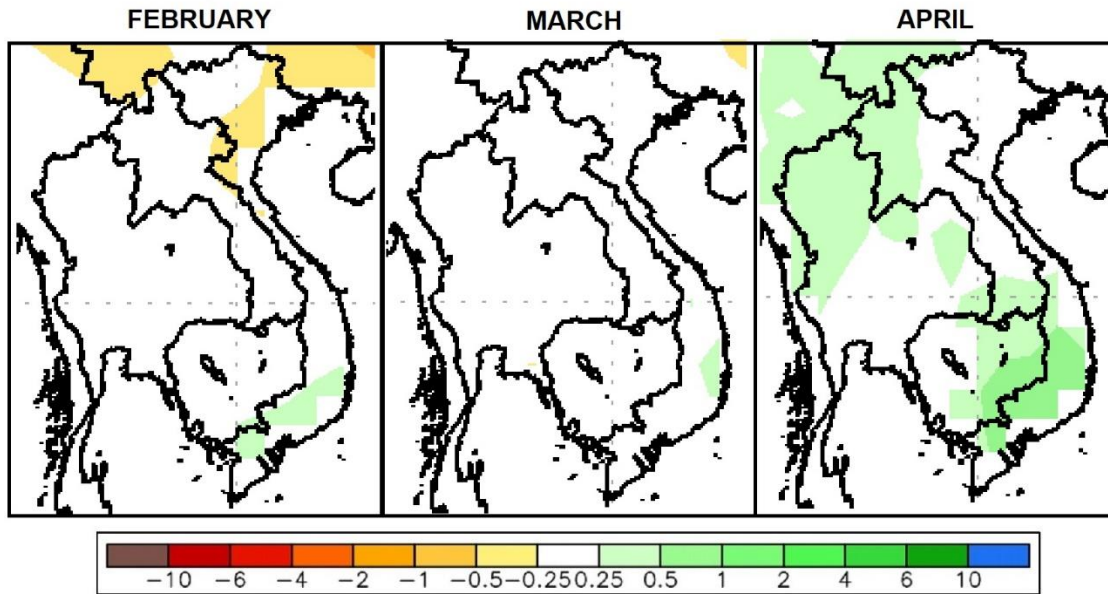
Flash flood events are not likely to happen in the LMB next week. However, local heavy rain in a short period of time might still be possible with unexpected short flash floods. During the dry season if extreme weather occurs, the information on flash flood guidance for the next one, three, and six hours is updated at <http://ffw.mrcmekong.org/ffg.php>.

Further detailed information on Flash Flood Information Warning, as well as on its explanation, is available for download [here](#).

## 6.4 Drought forecast

There are several climate-prediction models with different scenarios in the upcoming months. The MRC's DFEWS adopts an ensemble model called the North America Multi-Model Ensemble (NMME), which averages all scenarios, and downscales the forecasts to the regional level. The Viable Infiltration Capability (VIC) is then used to generate soil moisture and runoff for the whole basin.

[Figure 18](#) below shows the NMME forecasts of rainfall anomaly (mm/day) for Feb, Mar, and April 2023 in over the LMB area.



**Figure 18. Monthly forecast of NMME for Jan, Feb and Mar 2023.**

Figure 18 above shows that in Feb and Mar 2023 the LMB will be likely normal all over the region. However, in April the NMME forecasts that the region will receive above average rainfall specifically in the north and the south of the LMB. No drought is forecasted for the next three months.

Table 2. Weekly River Monitoring Bulletin.



## Mekong Bulletin

Mekong River Commission Secretariat (MRCS)  
 Regional Flood and Drought Management Centre (RFDMC)  
 P.O. Box 623 #576, National Road #2, Chak Angre Krom, Meanchey, Phnom Penh, Cambodia  
 Tel: (855-23) 425353, Fax: (855-23) 425363, Email: floodforecast@mrcmekong.org

Forecast period from: 28 February to 06 March 2023

Date: 27 February 2023

LOCATION	Country	Observed Rainfall (mm)	Zero gauge above M.S.L (m)	Min water level against zero gauge (m)	Observed W. level against zero gauge (m)		Forecasted Water Levels (m)							
					26-Feb	27-Feb	28-Feb	01-Mar	02-Mar	03-Mar	04-Mar	05-Mar	06-Mar	
Jinhong		0.0	-	-	536.10	536.02								
Chiang Saen		0.0	357.110	0.00	2.47	2.42	2.40	2.35	2.24	2.16	2.08	2.10	2.15	
Luang Prabang		0.0	267.195	2.53	8.92	9.12	9.15	9.12	9.09	9.04	9.00	8.97	8.89	
Chiang Khan		0.0	194.118	1.91	4.26	4.48	4.65	4.68	4.66	4.63	4.60	4.55	4.50	
Vientiane		0.0	158.040	-0.28	1.54	1.65	1.85	2.03	2.06	2.04	2.00	1.96	1.91	
Nongkhai		0.0	153.648	0.33	1.33	1.34	1.42	1.52	1.53	1.52	1.50	1.48	1.45	
Paksane		0.0	142.125	0.10	2.40	2.38	2.40	2.48	2.57	2.58	2.56	2.53	2.51	
Nakhon Phanom		0.0	130.961	0.18	1.55	1.43	1.37	1.38	1.43	1.55	1.53	1.48	1.45	
Thakhek		0.0	129.629	1.38	2.92	2.66	2.57	2.60	2.68	2.80	2.77	2.71	2.67	
Mukdahan		0.0	124.219	0.72	1.91	1.83	1.70	1.65	1.70	1.81	1.95	1.97	1.93	
Savannakhet		0.0	125.410	-0.65	1.12	1.08	1.06	1.05	1.07	1.15	1.23	1.24	1.21	
Khong Chiam		0.0	89.030	1.02	2.27	2.26	2.17	2.03	1.96	2.02	2.15	2.31	2.36	
Pakse		0.0	86.490	0.03	1.28	1.28	1.21	1.11	1.07	1.11	1.21	1.34	1.38	
Stung Treng		nr	36.790	0.32	2.78	2.77	2.76	2.70	2.63	2.60	2.63	2.70	2.80	
Kratie		nr	-1.080	3.06	7.43	7.47	7.47	7.45	7.37	7.30	7.25	7.30	7.38	
Kompong Cham		nr	-0.930	0.65	2.98	2.86	2.82	2.80	2.80	2.75	2.78	2.81	2.88	
Phnom Penh (Bassac)		nr	-1.020	1.58	2.35	2.33	2.30	2.29	2.27	2.25	2.24	2.23	2.22	
Phnom Penh Port		-	0.000	0.14	1.21	1.12	1.08	1.05	1.03	1.03	1.01	1.02	1.03	
Koh Khel		nr	-1.000	1.52	2.52	2.54	2.50	2.47	2.46	2.44	2.42	2.41	2.40	
Neak Luong		nr	-0.330	0.81	1.72	1.68	1.63	1.59	1.60	1.60	1.59	1.58	1.57	
Prek Kdam		nr	0.080	0.58	1.54	1.37	1.34	1.31	1.29	1.27	1.26	1.25	1.24	
Tan Chau		0.0	0.000	-0.37	0.26	0.25	0.23	0.29	0.36	0.47	0.67	0.90	0.95	
Chau Doc		nr	0.000	-0.60	0.38	0.38	0.39	0.46	0.55	0.68	0.90	1.13	1.20	

**REMARKS:**

-: not available.  
 \*: reference stations without forecast.  
 nr: no rain.

River Flood Forecaster

KHEM Sothea

**NOTE:** Discharge at Luang Prabang may be influenced by hydropower operations (at both upstream and downstream).  
 For more info, please refer to this link:  
<http://www.mrcmekong.org/>; [http://ffw.mrcmekong.org/bulletin\\_wet.php](http://ffw.mrcmekong.org/bulletin_wet.php); <http://ffw.mrcmekong.org/reportflood.php>

## 7 Summary and Possible Implications

### 7.1 Rainfall and its forecast

This week, no rainfall was observed along the Mekong River from Chiang Saen station down to the lower part at Tan Chau and Chau Doc in Viet Nam. Compared with last week's amount, the rainfall this week was considered low in the Mekong region.

Based on the forecasted rainfall from satellite using GFS data, rainfall is likely to take place in the areas from the lower part of Cambodia to the 3S area and Mekong Delta in Viet Nam from 27 February to 07 March 2023, varying from 0.05 mm to 0.30 mm. This indicates that the hot weather in dry season has spread all over the LMB.

### 7.2 Water level and its forecast

The MRC's observed water level (WL) at Jinghong showed fluctuated level between 536.02 m to 536.32 m between 21 and 27 Feb 2023 (recorded on 7:00 am). The outflow fluctuated between 1,330.00 m<sup>3</sup>/s and 1,540.00 m<sup>3</sup>/s during 21-27 Feb 2023.

Mekong water levels this week remain in a normal condition—with 13 out of 22 stations will see water levels below their long-term averages. In general, this hydrological condition is due to the inflows from the upper Mekong River in China and dam operations in the tributaries of the Lower Mekong River Basin.

Stay updated with our river monitoring and forecasting to better prepare for flood and drought events. Find more details at <https://www.mrcmekong.org/>.

The flow volume of the Tonle Sap Lake is slightly higher than its LTA. From next week, the flow is expected to be decreasing due to less rainfall forecasted in the inflow catchments of the Tonle Sap Lake.

From Stung Treng to Kompong Cham, the water levels will go down. The water levels – at Neak Luong on the Mekong River, from Prek Kdam to Phnom Penh Port on the Tonle Sap, and from Chaktomuk to Koh Khel on the Bassac – are forecasted to stay below their LTA.

The situation in Tan Chau on the Mekong River and Chau Doc on the Bassac River is expected to remain fluctuating. In Tan Chau and Chau Doc, the fluctuation of water levels was lower and higher than their LTA level, which **considered normal**.

Since the third week of September 2022, water levels across most monitoring stations in the LMB have increased due to the above-average rainfall but still staying lower than their LTA value (from middle to lower stretches within the LMB). The preliminary analysis of the hydrological conditions in the LMB over July–December 2020 and November 2020 to May 2021 was done as [Situation Report](#), which can be used as reference for the trend of water level and flows of the Mekong River Basin.

The contribution to the Mekong River's flow from the UMB in China (Yunnan component) is about 16% by the time the river discharges through the Mekong Delta into the Sea. By far the major contribution comes from the two major 'left-bank' (Eastern) tributaries between Vientiane – Nakhon Phanom and Pakse – Stung Treng, which together contribute more than 40% of the flows.

### **7.3 Flash flood and its trends**

With the predicted of rainfall for the coming week as mentioned earlier in [section 6.1](#), major flash floods are not likely to happen in the LMB.

### **7.4 Drought condition and its forecast**

During Feb 20-26, the LMB was at normal condition in the upper and lower parts but at moderate dry in some areas of Vientiane, Borikhamxay, Khammuane, Nong Khai, and Nakhon Phanom in the north and Otdar Meanchey in the south. Those specific drought hotspots are considered normal as they are caused by dry soil moisture phenomenon during dry season.

For the coming three months, no drought is forecasted over the LMB. In Feb and Mar 2023, the LMB will be likely normal all over the region. However, in April the NMME forecasts that the region will receive above average rainfall, specifically in the north and the south of the LMB.

**Annex A: Tables for weekly updated water levels and rainfall at the Key Stations**

Table A1: Weekly observed water levels

2023	Jinghong	Chiang Saen	Luang Prabang	Chiang Khan	Vientiane	Nongkhai	Paksane	Nakhon Phanom	Thakhek	Mukdahan	Savannakhet	Khong Chiam	Pakse	Stung Treng	Kratie	Kompong Cham	Phnom Penh (Bassac)	Phnom Penh Port	Koh Khel	Neak Luong	Prek Kdam	Tan Chau	Chau Doc
21/02/2023	536.05	2.06	8.94	4.23	1.84	1.54	2.52	1.42	2.85	1.75	1.08	2.11	1.20	2.72	7.35	3.05	2.32	1.24	2.46	2.08	1.52	1.66	1.83
22/02/2023	536.19	2.18	8.86	4.12	1.88	1.48	2.63	1.50	2.90	1.75	1.09	2.12	1.20	2.71	7.39	3.07	2.34	1.22	2.40	1.73	1.48	1.50	1.64
23/02/2023	536.18	2.27	8.76	4.04	1.34	1.38	2.60	1.59	2.98	1.83	1.12	2.13	1.20	2.77	7.37	3.06	2.33	1.25	2.40	1.64	1.51	1.07	1.22
24/02/2023	536.32	2.35	8.82	4.15	1.46	1.30	2.54	1.65	2.99	1.91	1.13	2.18	1.24	2.73	7.39	3.06	2.34	1.26	2.40	1.61	1.48	0.64	0.55
25/02/2023	536.08	2.37	8.88	4.14	1.54	1.30	2.47	1.61	2.93	1.93	1.14	2.24	1.27	2.78	7.43	3.05	2.36	1.19	2.52	1.68	1.56	0.33	0.36
26/02/2023	536.10	2.47	8.92	4.26	1.54	1.33	2.40	1.55	2.92	1.91	1.12	2.27	1.28	2.78	7.43	2.98	2.35	1.21	2.52	1.72	1.54	0.26	0.38
27/02/2023	536.02	2.42	9.12	4.48	1.65	1.34	2.38	1.43	2.66	1.83	1.08	2.26	1.28	2.77	7.47	2.86	2.33	1.12	2.54	1.68	1.37	0.25	0.38

Table A2: Weekly observed rainfall

2023	Jinghong	Chiang Saen	Luang Prabang	Chiang Khan	Vientiane	Nongkhai	Paksane	Nakhon Phanom	Thakhek	Mukdahan	Savannakhet	Khong Chiam	Pakse	Stung Treng	Kratie	Kompong Cham	Phnom Penh (Bassac)	Phnom Penh Port	Koh Khel	Neak Luong	Prek Kdam	Tan Chau	Chau Doc	
21/02/2023	0	0	0	0	0	0	0	0	0	0	0	0	0	0	0	0	0	0	0	0	0	0	0	0
22/02/2023	0	0	0	0	0	0	0	0	0	0	0	0	0	0	0	0	0	0	0	0	0	0	0	0
23/02/2023	0	0	0	0	0	0	0	0	0	0	0	0	0	0	0	0	0	0	0	0	0	0	0	0
24/02/2023	0	0	0	0	0	0	0	0	0	0	0	0	0	0	0	0	0	0	0	0	0	0	0	0
25/02/2023	0	0	0	0	0	0	0	0	0	0	0	0	0	0	0	0	0	0	0	0	0	0	0	0
26/02/2023	0	0	0	0	0	0	0	0	0	0	0	0	0	0	0	0	0	0	0	0	0	0	0	0
27/02/2023	0	0	0	0	0	0	0	0	0	0	0	0	0	0	0	0	0	0	0	0	0	0	0	0
<b>Sum</b>	0.0	0.0	0.0	0.0	0.0	0.0	0.0	0.0	0.0	0.0	0.0	0.0	0.0	0.0	0.0	0.0	0.0	0.0	0.0	0.0	0.0	0.0	0.0	0.0





## Mekong River Commission Secretariat

P. O. Box 6101, 184 Fa Ngoum Road, Unit 18 Ban Sithane Neua, Sikhottabong District, Vientiane 01000, Lao PDR  
Tel: +856 21 263 263. Fax: +856 21 263 264 [www.mrcmekong.org](http://www.mrcmekong.org)

© Mekong River Commission 2020